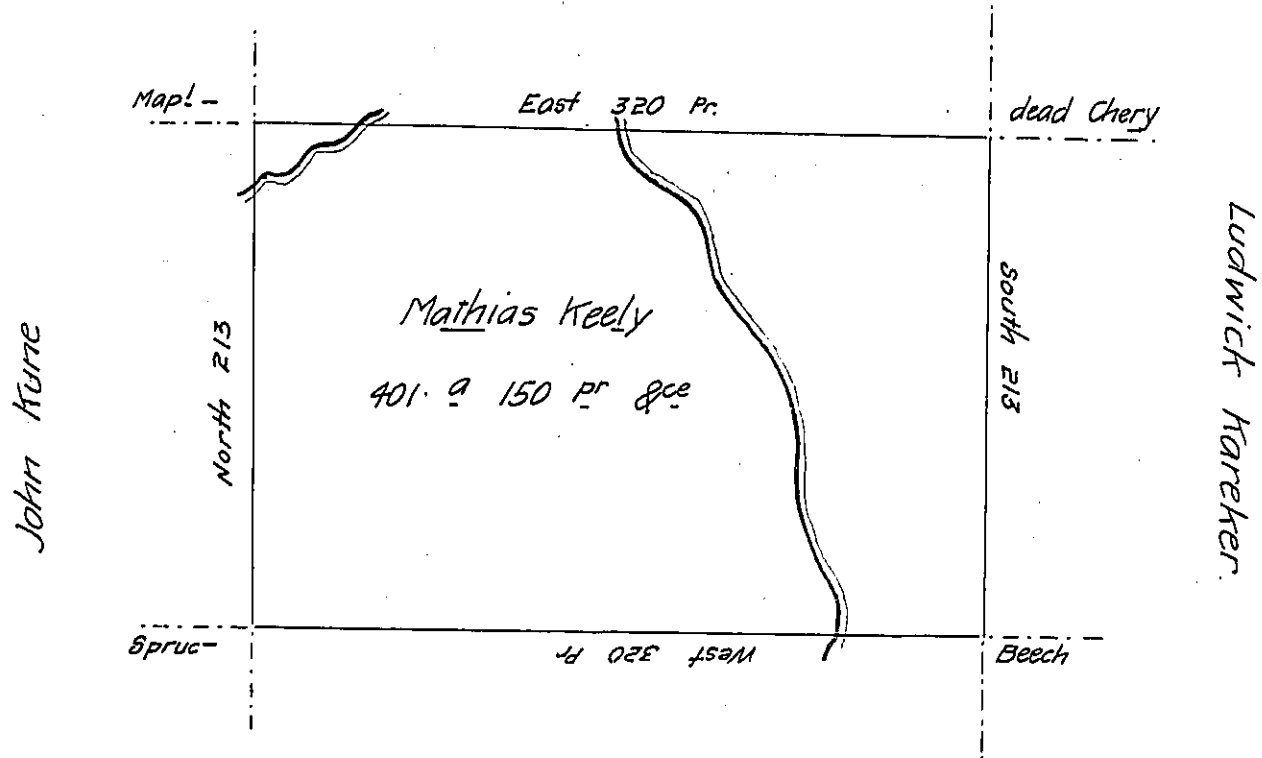


Emanuel Josephson



Wm Kinley

Situate on the West Side of French Creek in Allegheny County Con-
 taining 401.9 & 150 Prs & Allowance of Six Per Cent for Roads &c. Surveyed
 the 6th day of November 1794 In Pursuance of a Warrant dated the 13th
 day of April 1792

Wm Power D.Y.S.

To Daniel Brodhead Esq:
 Surveyor General.

IN TESTIMONY that the above is a copy of the original remaining on file in
 the Department of Internal Affairs of Pennsylvania, made
 conformably to an Act of Assembly approved the 16th day of
 February, 1833, I have hereunto set my Hand and caused
 the Seal of said Department to be affixed at Harrisburg,
 this fourteenth day of July 1905

Geo. P. ...
 Secretary of Internal Affairs.